

RIF . S57 02

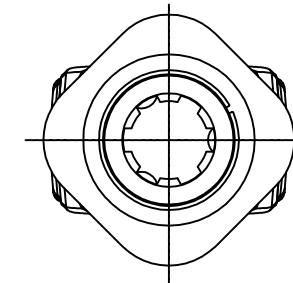
RIF . S60 02

CONTROLLO CENTRATURA PER VELOCITA' 2.500 G/MIN

**WARNING!**



SECTIONS OF THE ASSEMBLY MARKED ARE NOT SHIELDED AND MUST BE SHIELDED BY AN INTERACTIVE GUARDING SYSTEM BINACCHI Srl DECLINES RESPONSIBILITY IF PROPER GUARD ARE NOT PROVIDED OR MAINTAINED.



TIPO-TYPE TYP  	CLIENTE-CUSTOMER-CLIENT-KUNDE  <i>DANI-TECH A/S per GMR</i>		DATA 13/12/19
	RIF.CLIENTE-CUSTOMER REF.-REF.CLIENT-BEZUG KUNDE	TIPO DI MACCHINA-TYPE OF IMPLEMENT-TYPE DE MACHINE-MASCHINENTYPE	
MODIFICHE-MODIFICATIONS-ANDERUNGEN-MODIFICACIONES <hr/> <hr/> <hr/>			
POTENZA : 21 Cv (540 g/min) COPPIA : 270 Nm (540 g/min)	NOTE : Spec per : controllo centratura		